

WELCOME TO THE BLANK'S 25th SEASON!

Hello friend-

Welcome to the world premiere of *A Singular They*. We have had a great time bringing Aliza Goldstein's beautiful play to life. It is Aliza's professional debut as a playwright.

I love new voices! I love new plays! That's why one of the first programs I created for The Blank over two decades ago was the Living Room Series - The Blank's New Play Development Program. We develop dozens of new plays in the LRS and offer them free to the public on Monday nights throughout the year. New plays need a "village" to bring them to life and we have an amazing group of member artists who love to do just that.

You are here for the culmination of our new play development process: from the Living Room Series, to our Living Room Series Plus! (which offers a more in-depth exploration process) and then finally our Mainstage Productions. *A Singular They* has gone through this entire process and now we give it to you.

We have developed and produced over 500 new plays in the LRS, many of them have gone on to great success. Nell Benjamin's *The Explorers Club* won the NY Outer Critics Circle Award for Outstanding New Off-Broadway Play when produced by Manhattan Theatre Club, Dr. Keeling's *Curve* about climate change starring Mike Farrell was produced at The Blank, USC, CalTech and shown on KCET, and E.M. Lewis' play *Heads* won the prestigious American Theatre Critics Primus Prize after having its world premiering at The Blank.

Another lovely piece of this puzzle is that Aliza is also a former winner in The Blank Theatre's Nationwide Young Playwrights Festival. We produced her first play when she was 15. We knew then that she was extremely talented and encouraged her to continue writing for the stage. Now we get to bring that relationship full-circle by presenting her work to the world.

Join our mailing list to stay up to date on all things Blank. And please come down and experience the Living Room Series. You get the exciting opportunity to see a brand new play in its initial stages and experience the fun of being a part of the creative birth of a new work of art. It's pretty cool. And you get to say "I saw it when..."

Cheers,
Daniel Henning

The Blank Theatre
Hollywood's Resident Theatre Since 1990

The Blank Theatre

DANIEL HENNING *Founding Artistic Director*

NOAH WYLE *Artistic Producer*

PRESENTS

A Singular They

WRITTEN BY Aliza Goldstein

DIRECTED BY Christopher J. Raymond

WITH

Nick Ballard* Lily Nicksay* Hannah Prichard

PRODUCERS

Sarah Allyn Bauer Daniel Henning Noah Wyle

ASSOCIATE PRODUCERS

Victoria Esquer Jennifer Kim Isabel Smith

SET DESIGN

Aaron Lyons

LIGHTING DESIGN

Donny Jackson

SOUND DESIGN

Rebecca Kessin

COSTUME DESIGN

Allison Dillard

STAGE MANAGER

Nic Dressel

PROPERTIES DESIGNER

Michael O'Hara

MARKETING DIRECTOR

Katherine Hunter-Blyden

CASTING DIRECTORS

Erica Silverman Bream & Cara Chute Rosenbaum

PUBLIC RELATIONS

Ken Werther Publicity

**Member of Actors' Equity Association, The Union of Professional Actors and Stage Managers
in The United States*

*This season at
The Blank
made possible
in part by*



Enriching Lives



The Ralph M. Parsons Foundation
The Rosenthal Family Foundation
The Plum Foundation
Department of Cultural Affairs, City of LA
Los Angeles County Arts Commission
Wells Fargo Securities
Bloomberg Philanthropies

THE CAST

(in order of appearance)

DIERDRE
BURBANK
MR. MAZER

Hannah Prichard
Lily Nicksay*
Nick Ballard*

Alternate Cast

(Only appear with notice)

DIERDRE
BURBANK
MR. MAZER

Montana Roesch
Erin Sullivan
Andy Wagner*

Time: Late 2011, Early 2012

Place: Allentown, Pennsylvania

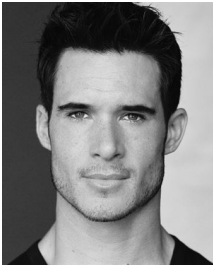
**Member of Actors'Equity Association, The Union of Professional Actors and Stage Managers in
The United States*

There will be no intermission.

A Singular They was originally developed in
The Blank's Living Room Series and LRS Plus

*Please turn off your cell phone prior to the performance. Please note that
photographing, videotaping or audio recording the performance is strictly forbidden.
Sorry, food and drinks are NOT allowed in the theatre. Thanks!*

WHO'S WHO IN THE CAST (Alphabetical Order)



NICK BALLARD (MR. MAZER) is so excited to be back at The Blank after performing in the World Premiere of *SUKIE AND SUE: THEIR STORY* and the *LIVING ROOM SERIES* here. Other favorite performances include *VANYA & SONIA & MASHA & SPIKE* at Portland Center Stage, the LA Premieres of *DOG SEES GOD* (GLAAD/LADCC/LA Weekly noms) and *ANITA BRYANT DIES FOR YOUR SINS* (GLAAD nom), and the World Premieres of *HEAVIER THAN...* and *WHEN STARS ALIGN*. You can see him in The Weinstein Company's *OPERATION BARN OWL* and the Ron Howard/Brian Grazer produced *THE ROSE WINDOW*. Some TV credits include *MODERN FAMILY* and HBO'S upcoming *WESTWORLD*, recurring roles on *DAYS OF OUR LIVES* and *HOLLISTON*, also MTV'S *HAPPYLAND*, *BONES*, *THE GLADES*, *COLD CASE*, *VALENTINE*, and *90210*. He would like to thank his wife Natalie for her never ending support and for being too good to be true.



LILY NICKSAY (BURBANK) is delighted to be back for the world premiere of *A SINGULAR THEY* after working on the workshop last December where she made her Blank Theatre debut. Lily recently starred in *SEE ROCK CITY* (Ovation Recommended, LA Times Critics Pick) and *LAST TRAIN TO NIBROC* (Ovation Nomination Best Production) at The Rubicon Theatre. Other theatre credits include *THE WILD DUCK* at A Noise Within (Ovation Nomination Best Featured Actress), the world premiere of *THE CURSE OF OEDIPUS* (The Antaeus Company), and *HEAVEN CAN WAIT* (Glendale

Centre Theatre). She also originated the role of Morgan Matthews in the long running show *BOY MEETS WORLD*. Other film and television roles include the upcoming feature *KILLING ANIMALS* (executive produced by James Franco), *THE NEGOTIATOR*, *UP CLOSE & PERSONAL*, *THE ADVENTURES OF ROCKY & BULLWINKLE*, with guest appearances on *THE MENTALIST*, *THE GUARDIAN*, *8 SIMPLE RULES*, and *JUDGING AMY*. Lily is a member of the Antaeus A2 Company. She received her MA degree in Latin and Ancient Greek from the University of St Andrews, Scotland. *currently seeking theatrical representation*



HANNAH PRICHARD (DIERDRE) is an actor from Kentucky where she received her BA in Theatre at the University of Kentucky. Since moving to Los Angeles she has been working with The Blank Theatre for the past two years as a volunteer, currently acting as a Weekly Producer in the Living Room Series. She is thrilled to continue on this journey with this wonderful cast after taking some time off from the stage. Hannah is currently apart of the continued web series through 1620 Media, "Realistic Street" and can be found in

multiple shorts and films produced by Lonely Birthday Productions. You can also watch her as a host throughout the week at Afterbuzz TV recapping various shows from the Free Form network. She wants to thank her family and friends for being endlessly supportive and inspiring. You can follow her on all social media platforms @thehotshotdude. Rock on.



MONTANA ROESCH (DIERDRE Alternate) is an up and coming actress joining The Blank Theatre for the first time in this world premier production of *A Singular They*. A graduate of the San Francisco School of the Arts and American Conservatory Theatre, Montana moved to L.A. to attend Stella Adler Academy Los Angeles and begin her TV and Film career. Recent theatre credits include: *Den of Thieves* (Boochie, Dir. Alex Aves), *Six Degrees of Separation* (Tess, Dir. Milton Justice), and *Korczak's Children* (Esterka Winograd, Dir. Domonique Lozano). TV and film credits include: *Wicked City*

(ABC), *The Manny* (Dir. Tim Batthurst, and *Legna* (Dir. Stan Harrington).



ERIN SULLIVAN (BURBANK) is thrilled to be a part of A Singular They. She has previously worked with Hollywood's Ethos Theatre Company, playing Puck in A Midsummer Night's Dream, and Juliet in Romeo & Juliet. However, her most recent work has been onscreen. Her newest film BOOST, coming out later this spring, premiered at LA's FirstGlance Film Festival last year, and stars Danny Trejo. She is excited to return to the stage with this incredible cast and crew!

She would love to thank her family and friends for all their amazing support, and of course, the Blank Theatre Company for the opportunity to work on such a brilliant play.



ANDY WAGNER (MR. MAZER) is a graduate of Yale University and LAMDA. TV credits include: The Newsroom, Criminal Minds: Beyond Borders, All My Children, Castle. Film credits: Kidnap (w/ Halley Berry), Hopeless Romantic (w/ French Stewart & Brandon T. Jones) Andy is also a teacher at the Aquila Morong Studio where he teaches Acting for Teens and is a member of the sketch comedy troupe IT'S THE COPS! performing Sundays at the iO West in Hollywood. Thank you to The Blank, Christopher, and Aliza for their wonderful work and for bringing me along on this wonderful ride.

WHO'S WHO IN PRODUCTION

CHRISTOPHER J. RAYMOND (DIRECTOR) first became involved with The Blank Theatre after seeing the acclaimed production of Michael John LaChiusa THE WILD PARTY. Christopher has served as the assistant director to Daniel Henning on The World Premiere of DICKIE AND BABE: THE TRUTH ABOUT LEOPOLD & LOEB, The West Coast Premieres of Christopher Durangs WHY TORTURE IS WRONG AND THE PEOPLE WHO LOVE THEM and Pulitzer Prize nominee Stephen Karam's SPEECH AND DEBATE. Chris recently directed the ovation nominated and award winning "end of the world" premiere of the apocalyptic rock opera DOOMSDAY CABARET by Michael Shaw Fisher. Chris serves on the Artistic Committee for The Blank's new play development program The Living Room Series aka LRS, where A SINGULAR THEY was first developed. As an actor, he has performed both off Broadway and regionally in MOON FOR THE MISBEGOTTEN, OHELLO, LOST IN YONKERS, ANTONY AND CLEOPATORA. THE DIARY OF ANNE FRANK. Chris is currently in development for his directorial feature film debut for his adaptation of D.M. Thomas' novel FLYING INTO LOVE with Ruth Wilson attached as Jackie Kennedy. His award winning screenplay and finalist for the Nicholls fellowship DAUGHTER OF HEAVEN is in development in China. A native New Yorker, he lives in LA with his wonderful wife Jessica and his two amazing daughters Lily & Scarlett.

ALIZA GOLDSTEIN (PLAYWRIGHT) is a playwright and video game writer based in Orange County, CA. Her work has been produced at theaters across the

country, including the Kennedy Center in Washington, D.C. She is a two-time finalist of the International Thespian Society's Playworks program (2008 and 2009), a four-time winner in the Blank Theatre Company's Young Playwrights Festival (2008, 2009, 2010, 2011), and a 2009 finalist in the Young Playwrights Inc. National Playwriting Competition. She is also the recipient of the 2007 VSA Playwright Discovery Award, the 2013 John Golden Prize for Undergraduate Playwriting, and the 2015 Ebell of Los Angeles Playwright Prize.

DANIEL HENNING (ARTISTIC DIRECTOR) is the Founding Artistic Director at The Blank. He has produced over 50 Mainstage Productions, 24 seasons of the Living Room Series and 23 Young Playwrights Festivals. He serves on the Western Regional Council for the Actor's Fund and is the former Vice-President of the Hollywood Arts Council. His initiative STAYIN' LIVE! to support the Intimate Theatre movement in LA most recently achieved the official city designation of "live theatre district" for Hollywood Theatre Row. Henning's productions have been nominated for 189 LA theatre awards, winning 59 including "Best Production" from LA Drama Critic Circle Awards, LA Weekly Awards, Ovation Awards, NAACP Theatre Awards, BackStage Garland Awards etc. Henning won the NAACP Theatre Award for "Best Director of a Musical" for Michael John LaChiusa's THE WILD PARTY ("Best Production" -LA Drama Critics Circle, NAACP Theatre, BackStage Garland and 17 other awards). He made his Lincoln Center directorial debut with The Girly Show and directed the world premiere of Mr. Shaw Goes to Hollywood at Laguna Playhouse. As director and writer, his television and film work include MTV's ROB DYRDEK'S FANTASY FACTORY and the short film CRITIC'S CHOICE. His plays include DICKIE & BABE: THE TRUTH ABOUT LEOPOLD & LOEB. He is a graduate of NYU's Tisch School of the Arts, Circle in the Square Theatre School, and American Conservatory Theatre.

NOAH WYLE (ARTISTIC PRODUCER) best known for his role as Dr. John Carter on NBC's long running hit, E.R., Noah has served as Artistic Producer for The Blank since 1997. His history with the company, however, dates back to its inception, as he was cast in its inaugural production of SEXUAL PERVERSITY IN CHICAGO in 1993. Whether acting, directing or producing for The Blank's Living Room Series, Young Playwright's Festival, or mainstage, he remains as committed as ever to assisting The Blank achieve its goal of becoming the FIRST regional theatre in Hollywood. He splits his time between Santa Ynez, CA and Los Angeles, with his three beautiful children, Owen, Auden, and Frances, and can be seen in the TNT drama, FALLING SKIES and THE LIBRARIANS.

SARAH ALLYN BAUER (PRODUCER) has loved working with The Blank Theatre for the past six years and is honored that this is her final show as Producer. She started as a volunteer in 2009 and worked her way up the ladder. She has produced the last three YPF's at The Blank and the mainstage productions of: Something Truly Monstrous, Sons of the Prophet, Peter Pan: The Boy Who Hated Mothers, and The Why. Sarah is also an actress and TV credits include: AHS: Hotel, Masters of Sex, Murder In The First. You can also find her on YouTube on Monster Shrink (www.monstershrink.com). She's been seen onstage in YPF, Diane in

Trainspotting, Stratiyss in Lysistrata and various other plays around Los Angeles. Her next adventure is as Event and Marketing Coordinator for Dolby Theatre. She is thrilled to be able to call The Blank her home theatre and is very thankful to be working with so many talented people. Thank you to mom and dad for their support and endless supply of cookies and hummus! www.actinglikeachef.com

HEATHER PROVOST (PRODUCING DIRECTOR) is a TONY Nominated, DRAMA DESK, OUTER CRITICS CIRCLE, and DRAMA LEAGUE Nominated Producer. Critically acclaimed hits on Broadway include "Reasons To Be Pretty" written by Neil LaBute (3 Tony Nominations including Best Play) and the musical "[title of show]" (Tony Nomination for Best Book of a Musical) following its hit Off-Broadway run, which garnered three OBIE Awards. She also produced the hugely successful "Under My Skin" segment of The Pink Campaign on Broadway at the American Airlines Theatre, in which all proceeds were donated to the Susan G. Komen Foundation. She produced and directed the California Theatre's critically acclaimed productions of "Driving Miss Daisy," and "Love Letters," and was the Producer of the Theatre for Young Audiences Equity tours of "Page To The Stage" and "History of Musical Theater". She produced the short film Harmony starring Jason Alexander and just wrapped on the feature film Racing Colt which she produced and co-directed. She is currently producing the new Broadway-bound play, "Coffee Stains" and musical "V-V-Voice," as well as producing the new feature films Among, Harmony, and A December Destiny. She is founding partner at Provost Entertainment Inc., was on faculty at The Commercial Theater Institute in NYC and is a proud graduate of The Florida State University.

NIC DRESSEL (STAGE MANAGER) is thrilled to be Stage Managing his first Blank Theatre production. He is a BFA graduate from Michigan State University, the cohost of We Didn't Start The Podcast on iTunes, and the titular star of the cooking show Nic's Kitchen on YouTube.

AARON LYONS (SET DESIGNER) does theatre. Lots of it. His work as an actor, director, designer, SM, TD, PM has been seen in LA theatre for the past 14 years. For more info, visit him at www.AaronLyons.net Thank you for supporting live theatre.

Donny Jackson (LIGHTING DESIGNER) Design highlights include Father, Son & Holy Coach (Odyssey Theatre), Fat Pig (Hudson Theatre), Closely Related Keys (Lounge Theatre), the West Coast premiere of In the Heights (Casa 0101 Theatre), Phenomenal, written and directed by Macy Gray (Ramon Cortines Performing Arts), Spring Awakening (Long Beach Playhouse), and the NY premiere of Four Clowns (La Mama Experimental Theatre). Current productions include Blood (The Complex Theatre) and Weapons (Lounge Theatre). Other work includes Cock (Creative Works Theatre), Finding Nick (Zephyr Theatre), RENT (Hudson Theatre), Halfwits Last Hurrah (Four Clowns), A Chorus Line (Freud Playhouse), Sublimity (Lyric-Hyperion Theatre), Bat Boy, The Glass Menagerie, Fiddler on the Roof and Death of a Salesman (Long Beach Playhouse). He is Resident Lighting Designer for Four Clowns Theatre Co, a theatre instructor at Cypress College and holds an MFA in Lighting from UCLA. www.DonnyJackson.com

ALLISON DILLARD (COSTUME DESIGNER) has an MFA in Costume Design and Technology from the University of Missouri-Kansas City and works as a freelance designer and technician in and around Los Angeles. Recent local design work includes: Dream Boy, BootyCandy (Celebration Theatre), Something Truly Monstrous (Blank Theatre), Failure: A Love Story (Coeurage Theatre), Into the Woods, Seussical (Milken Schools), The Discord Altar (OperaWorks), Sons of the Prophet (Blank Theatre), James and the Giant Peach (Mirman School), The Arsonists (Western Stage), The Homosexuals (Celebration Theatre). Her work can be seen at www.allisondillard.com.

REBECCA KESSIN (SOUND DESIGNER) Recent designs include Dream Boy, Bootycandy, The Homosexuals, Revolver (Celebration), The Why, Peter Pan: The Boy Who Hated Mothers, Young Playwrights Festival (The Blank Theatre), Appropriate (Assistant Design - Mark Taper Forum), Niagara Falls, The Whiskey Maiden (Theatre of NOTE), If You Can Get to Buffalo (Son of Semele), What the Butler Saw (Associate Design - Mark Taper Forum), The Max Factor Factor (NoHo Arts Center), Object of Her Affection (Automata), Woman Parts (Son of Semele), The Black Suits (Assistant Design - Kirk Douglas), Tribes (Associate Design - La Jolla Playhouse), Wrap Your Heart Around It (Falcon Theatre), Vera Stark, Next Fall, In Motherwords (Associate Design - The Geffen Playhouse), Clybourne Park (Associate Design - Mark Taper Forum), The Savannah Disputation, On Golden Pond, The All Night Strut!, Educating Rita (The Colony), Gypsy, Three Tall Women, Crumbs..., Fabulation!, Miss Witherspoon (West Coast Ensemble), Stranger (Bootleg Theatre - Garland Nomination), Kiss of the Spiderwoman (Havok - Garland Nomination) www.rebeccakessin.com

MICHAEL O'HARA (PROPERTIES MASTER) has been doing props around Los Angeles for many years now. Besides the Blank, his work has appeared at Celebration Theatre, East West Players, The Road Theatre, Coeurage Theatre Company, The Production Company and Circle X to name a few. He is happy to be back at the Blank for A Singular They. Many thanks to the cast and production team. Thank you for supporting theatre in Los Angeles.

VICTORIA ESQUER (ASSOCIATE PRODUCER) recently graduated from Whittier College with a degree in Theatre Arts and a minor in Broadcasting. She has been very active in the theatre for the past fifteen years. Last summer, Victoria was the Assistant Producer of The Blank Theatre's Young Playwrights Festival (YPF), and this past summer she was a Weekly Producer for YPF. She has performed in several productions throughout college including: Dead Man's Cell Phone, The Taming of the Shrew, The Last Days of Judas Iscariot, and Hairspray. She was also the Assistant Stage Manager for Angels in America Part I: Millennium Approaches. She would like to thank her parents for being her number one fans and loudest cheerleaders. She would also like to express much gratitude and appreciation to Sarah and Daniel for giving her this wonderful opportunity. "Do what you love and love what you do."

JENNIFER KIM (ASSOCIATE PRODUCER) is a budding producer and actor from Orange County. A graduate of University of California San Diego, she

has designed, acted, and assisted in producing many theatre department productions including *Three Sisters*, *The Sign in Sydney Brustein's Window*, and new plays by UCSD students. *A Singular They* is Jennifer's second show to be an Associate Producer for the Blank Theatre and she is delighted to join the team once again.

ISABEL SMITH (ASSOCIATE PRODUCER) is thrilled to be joining *A Singular They* as an associate producer. She joined The Blank last summer as an LA County Intern and associate produced the 2015 Young Playwrights Festival and *The Book of Liz's 10th Year Reunion Benefit Reading*. In addition to producing for The Blank, Isabel is an active violinist and jazz singer who recently graduated from UC Berkeley in December with a Music degree. She feels incredibly lucky to be part of the Blank Theatre family and she can't wait to see the show!

KEN WERTHER PUBLICITY (PUBLIC RELATIONS) has been a staple in the Los Angeles performing arts community since 1982. Public relations, producing, directing. Press representation for The Blank Theatre since 2005. As producer: *All Your Hard Work* (Brimmer Street Theatre Company), *The Good Boy* (LA Theatre Center); *The Importance of Being Earnest* and *The Taming of the Shrew* (Queer Classics). Assistant director: *Stop the World, I Want To Get Off* (Musical Theatre Guild), *The Women of Brewster Place* (Celebration Theatre), *The Woodsman* (Coourage Theatre Company). For a complete listing of PR activities, visit www.kenwerther.com.

KATHERINE HUNTER-BLYDEN (MARKETING DIRECTOR) leads KHB Marketing Group, a strategic marketing and advertising consultancy. She has over 20 years experience in traditional and digital marketing. Katherine's experience includes working with Fortune 500 brands as well as nonprofits. She is a board member for SCORE Los Angeles and Parents as Partners: The Autism Education and Change Network. Katherine is a graduate of Creighton University and Dartmouth College.

ERICA SILVERMAN BREAM (CASTING DIRECTOR) is delighted to be back working with The Blank for another great season. Recent credits include new series *COLONY*, Hulu miniseries *11/22/63*, as well as previous projects: *REVOLUTION*, *STAR TREK: INTO DARKNESS*, *FULL CIRCLE* and many others. Love to all at The Blank who feed her theatre hunger so often and spectacularly. And to her partner in crime, Cara, for being the best always.

CARA CHUTE ROSENBAUM (CASTING DIRECTOR) is honored to be working again with her family at The Blank on this awesome play. Past television casting credits include: *"The Last Man On Earth," "The Mindy Project," "The League," "Leverage," "Hawthorne,"* as well as many others. A million thanks to QS and Sarah for being wonderful, and thank you to Erica Silverman Bream for making it so easy and fun. Last but not least, thank you to her husband for being so awesome.

SPECIAL THANKS

Staff

Founding Artistic Director	Daniel Henning
Artistic Producer	Noah Wyle
Producer	Sarah Allyn Bauer
Producing Director	Heather Provost
Technical Director	Aaron Lyons
Office Manager	Katie Woerner
Press Representative	Ken Werther
Marketing Director	Katherine Hunter-Blyden
LRS Artistic Committee	Beth Bigler, Elena Campbell-Martinez (Chair), Lainnie Felán, Josh Levine, Shelagh McFadden, Christopher J. Raymond, Jennie Webb, Jason Weiss
Graphics	Rick Baumgartner
LRS Technical Director	Megan Frances
LRS Submissions Coordinator	Lainnie Felán
Producing Assistants	Crystal Hui, Andrea Ramos, Jeffery Rodriquez, Sydney Russell
Mascot	Betty The Wonder Puppy

BOARD OF DIRECTORS

**Paulo Andrés, Rick Baumgartner, Laura Bousman, Daniel Henning,
Pekka Kauranen, Jack Kenny, Susie Landau Finch, Barbara Ligeti,
Angela Oh, Angel Parker, Priscilla Pesci, Marcia Seligson, Troy Thompsen,
Ken Werther, Noah Wyle (Chairman)**

BOARD OF ADVISORS

**John Bowab, John Holly, Virginia Madsen, Debbie Reynolds, DB Sweeney,
Tiffani Thiessen, April Webster, Vanessa Williams, Martin Wiviott**

THE BLANK THEATRE

Office: P.O. Box 1094, Hollywood, CA 90078

Mainstage: 2nd Stage Theatre, 6500 Santa Monica Blvd, Hollywood, CA 90038

Ticket Line: 323.661.9827

Admin: 323.871.8018

Email: info@theblank.com

www.theblank.com

Donors

ARTISTIC DIRECTOR'S CIRCLE (\$5,000 and above)

The Plum Foundation, Sara and Noah Wyle, Los Angeles County Arts Commission, Dept. of Cultural Affairs, City of Los Angeles, Rosenthal Family Foundation, Bloomberg Philanthropies, Nicholas Caprio, Mandy Blumenthal, Kiki and David Gindler, The Ralph M. Parsons Foundation

PRODUCER'S CIRCLE (\$1,000 - \$4,999)

Kristina Sanborn and Ron Luebbert, Troy Thompsen, Hargrove Pierce Foundation, Curtis Wallace, David Rambo and Ted Heyck, Hollywood Chamber of Commerce, April Webster, Paulo Andres, Benton Brown, Marcia Seligson and Tom Drucker, Wells Fargo, William Goodell

WRITER'S CLUB (\$500 - \$999)

Bobby Cheng, Ken Wayne, Bert V. Royal, Todd Milliner, Christine Andrew, James Musante, Jack Laufer, Craig Rogers, Scott Wilson, Ben Stillwell, Lucas Reiner, Loni Peristere or Zoic, Inc., Randi Norman, Jeffery and Susan Neustadt, Traute Gleeson, Stephen Davids, Lisa Cerone, Gary and Roneet Carmell, The Carabasi Family, Laura Bousman, Darren and Laura Bousman, Harry Abrams

ACTOR'S CLUB (\$100 - \$499)

Michael Nguyen, Jim McClintock, Sharon Wheaton, Barbara Ligeti, Christopher Shields, Ellice Papp, Angel Parker and Eric Nenninger, John Krueger, Lisa Field, Kristy Edmunds, Eric Eichorn, Lee Thompson, Michael Terry, Stephen Smith, Sydney Shapiro, Ellery Sprayberry, Susie Finch, Charles Hapgood, A.B. Fischer, Robert Dixon, Brianna Brown, Joni and Miles Benickes, Marjorie Beale, Michael Herzlin, Lisa Siegel, John and Teresa Mayer, Robert Foster, Susana Epstein, Rita De Matteis, Pat and Helen Bauer, Cheri Steinkellner, Deborah & Stephen Wyle, Roland and Debbie Woerner, Khary & Stacy Payton, Richard Mendoza, Sharon Hallett, Donna Brunasso, Ellen Crawford and Mike Genovese, Debra Frank, Edward Fitz, David Fertik, April and Ron Dammann, Gratitude Collaborative, Jay Bevan, Christopher and Anadel Baughn Barbour, Amy Pietz, Kroger Grocery, Gedde Watanabe, Christine Wasserman, Lapidus Family, Miguel Valdes-Sueiras, Lee Thompson, David Sweeney/Sweeney Entertainment, Troy Sattler, Robin Russin, Robert Rush, Irene Roseen, Michael Napoli/Performing Arts Live, Gilda Liardet, Robert and Kathleen Lesko, Roberta Keuter, Gregory Jbara, J Greenstein, Holly Harold, Julie Hebert, Jeffrey and Doris Goldstein, Gabrielle Elyse, Lee Draper, Marc Dube, Christopher Fain, Frances Fisher, Ferne Cassel, Zach Callison, Markia Cahn, Deborah and Craig Bruenell, Erica Bream, John Bowab, Polly Borland, Maura C. Berkelhamer, Travis Baker, John Bauman, Jean Adelman, William and Julia Anderson

FAN CLUB (\$25 - \$99)

Jeffrey Wise, Lourdes Castillo, Bagrad Cholakian, Joel Laski, Stephen Mendillo, Ammon Noland, Richard Parks, David Posner, Ruth Simon, Jeff Tabnick, Alyssa Weisberg, Arnon and Shoshana Kimeldorf, Denise Kautter, Karen Hyman, Doris Haines, Richard Greenfield, Irene Castaldo, Sean Chandler, James Freed, Mary Grant, Kristine Hurst, Kathryn Jackson, James Patrick Kelly, Sharon Lawrence, Sean Love, April McCaffery, Mason Rourman, Gary Ruhlen, David Serby, Nanci Simari, Linda Stein, Melissa Strauss, Vicki Vodrey, Lenny Wolpe, Jaisey Bates, Sara Pratter, Mark Hensley, Carolyn Ammon, Barbara Bain, Jennifer Bosserman, Daniel Henning, Stephanie Arapian, Jamie Ashley, Diane Baker, Adam Belanoff, Kathy Bosco, Leigh Buck, Geraldine Chambliss, Johnny Clark, Kurt Ela, Jeanne Garland, Anel Gorham, Jason Graae, Susan Grossman, Ira and Jo Ann Heiman

Ticket sales cover **less than half** of The Blank's production costs. Donors are vital partners in producing great theatre. In return for their generosity, donors have behind-the-scenes access and opportunities to attend exclusive events in support of The Blank's artistic, educational, and community outreach programs.

The Blank Theatre is a non-profit arts organization listed under section 501(c)(3) of the IRS Code. Your donations are tax deductible to the fullest extent of the law.

For a comprehensive list of donor benefits, please visit www.TheBlank.com click "Donate Now" or call our office 323.871.8018. Thank you!

The Blank Recommends...



1958 Hillhurst Ave,
Los Feliz
7123 Melrose Ave,
Hollywood

www.luciferspizza.com



OFF VINE RESTAURANT

OPEN MONDAY THRU FRIDAY
FOR LUNCH

11:30 TO 2:30 (FRIDAY'S TILL 3:00)
WEEKEND BRUNCH 10:30 TO 2:30

DINNER EVERY NIGHT!!!

6263 Leland Way,
Hollywood CA. 90028

www.offvine.com

323-962-1900